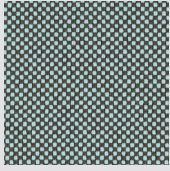
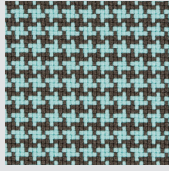


TESSUTO FABRIC

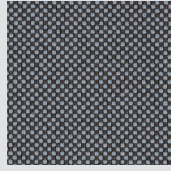
Go uni™ | Go check™ | Go couture™



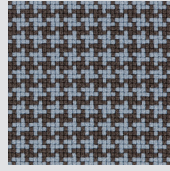
GCK68168



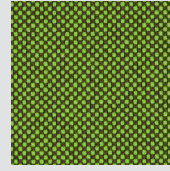
GCT68168



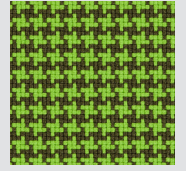
GCK60080



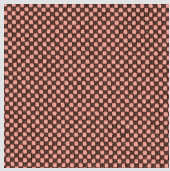
GCT600080



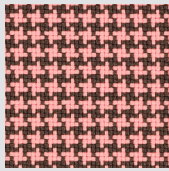
GCK68154



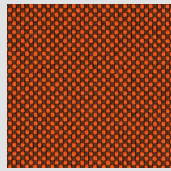
GCT68154



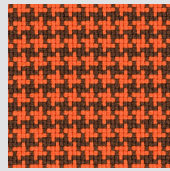
GCK64183



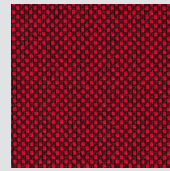
GCT64183



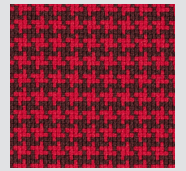
GCK63080



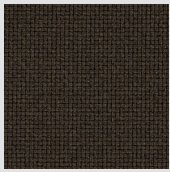
GCT63080



GCK64175



GCT64175



GU61141

Specifiche tecniche • Technical Specifications

Tipologia Typology	Tessuto per arredamento Upholstery fabric			
Peso Weight	435 g/lm (14.03 oz/lin.yd)			
Larghezza Roll width	140 cm (55")			
Composizione Composition	Trevira cs 100% Trevira cs 100%			
Solidità del colore allo strofinio Colour fastness to rubbing	Secco Dry	ISO-105X12	Scale 1/5, max 5	4 / 5
Solidità del colore allo strofinio Colour fastness to rubbing	Umido Wet	ISO-105X12	Scale 1/5, max 5	4 / 5
Resistenza all'abrasione Abrasion	100.000 Rubs 80.000 Rubs	BS EN 14465 BS EN ISO 12947-2 Martindale	Go uni Go check Go couture	
Resistenza all'abrasione Abrasion	60.000	ASTM D4157-07 Heavy Duty Upholstery	Go uni Go check	
Resistenza alla luce artificiale Tear growth resistance		EN ISO 105-B02	Scale 1/8, max 8	5 / 8
Resistenza al fuoco Burning behaviour	Will also pass other flammability standard. Flame retardant performance is dependent upon the foam used.	EN 1021 1&2 BS 5852 0&1 BS 5852 Crib 5 DIN 4102-B1 FAR/JAR 25.853 DIN EN 13501B-s1,d0 Önorm B3825 B1-Q1 NFP 92-503/504/505 M1 BS 7176 Medium Hazard CATB 117-2013 UNI 1975 Class 1 IM		
Resistenza al pilling Pilling		EN ISO 12945-2	Scale 1/5, max 5	5
Maintenance	Wash or dry cleaning. Can be wviped with Virkon S, Actichlor Plus, Prime Source ren-93 or Ethanol (70%-85%). Always follow the manufacturer's instructions and finish by wiping with a damp cloth.			P (W)
US ACT	AATCC 16 Light fastness AATCC 8 or 116 Wet/Dry crocking California Bulletin CAL 117-2013 section 1 ASTM D4157-02 WYZ Abrasion (Heavy Duty Upholstery) ASTM D3511 Pilling			Passa - Pass Passa - Pass Passa - Pass Passa - Pass Passa - Pass
Colore Colour	Leggere differenze di colore fra una partita e l'altra sono da considerarsi normali Slight color differences between one lot and another have to be considered within commercial tolerance			

Note

Notes

- Per rimuovere la polvere utilizzare un aspirapolvere.
- Ogni macchia o sporcizia devono essere puliti immediatamente con una soluzione di sapone neutro utilizzando un panno con movimenti circolari regolari.
- Non si accettano responsabilità per eventuali danni derivanti da un uso improprio, pulizia con prodotti chimici aggressivi o impregnazione con prodotti non idonei.

- To remove dust use a vacuum cleaner.
- Any stain, spills or soiling should be cleaned up promptly with a neutral soap solution using a cloth in smooth circular movements.
- We do not accept responsibility for any damage resulting from inappropriate use, chemical cleaning or additional impregnation.

- I risultati analitici sono riferiti esclusivamente al campione provato.
- Alterazioni del colore sono tollerate secondo gli standard industriali e non costituiscono motivo di contestazione.
- Ci riserviamo il diritto di modificare in qualsiasi momento e senza preavviso le specifiche del prodotto.

- The analytical results are referred only to the sample tested.
- Discolouration and colour deviations tolerated by permissible industrial standards which do not constitute reasons for claims.
- We reserve the right to modify, at any moment and without notice any product specifications.